



LEASE RATE: \$12-\$18/SF NNN | 1,400 SF SPACE

DEMOGRAPHICS

	1 mile	3 miles	5 miles
Estimated Population	5,297	53,998	88,045
Avg. Household Income	\$116,717	\$144,354	\$137,516

- 1,400 SF in-line space available - former boba tea shop
- Centrally located Liberty shopping center
- Great visibility and access from 291 Highway
- Less than market rates
- [Click Here to View More Drone Imagery of the Site](#)



CLICK HERE TO VIEW MORE
LISTING INFORMATION

For More Information Contact:

DANIEL BROCATO | 816.412.7303 | dbrocato@blockandco.com

PHIL PECK, CCIM | 816.412.7364 | ppeck@blockandco.com

Exclusive Agents

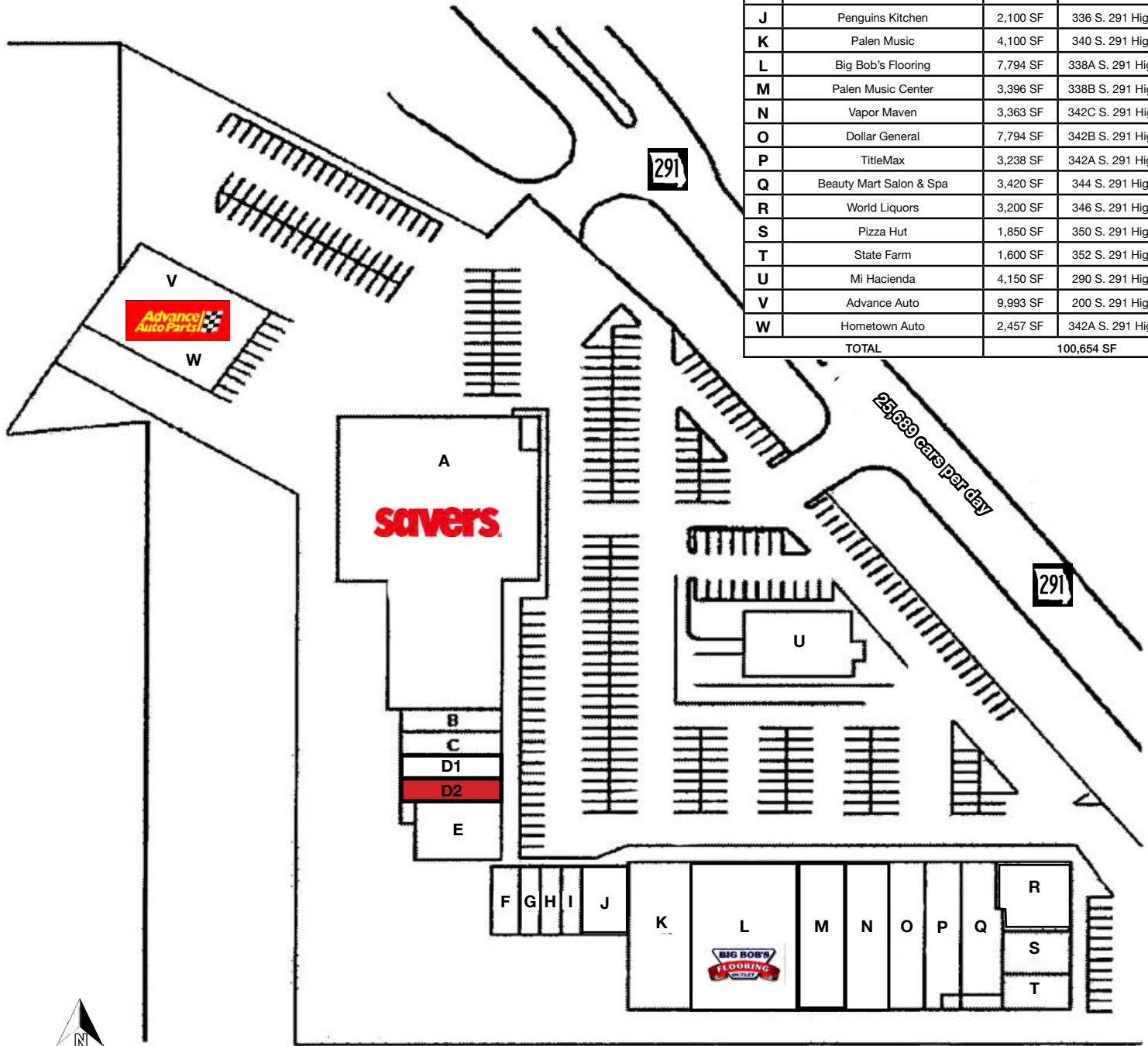
DRONE PHOTOS



DRONE PHOTOS

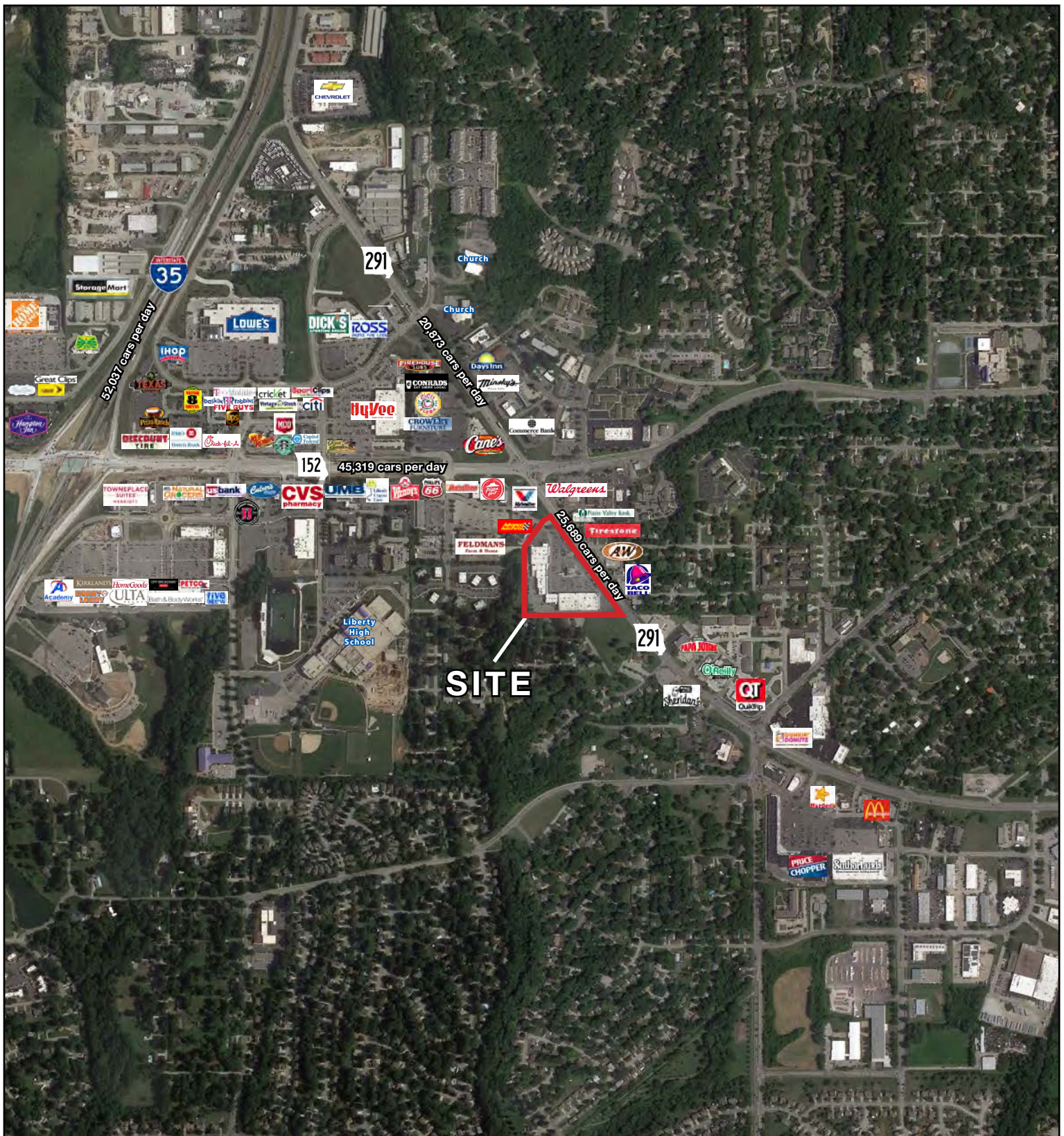


SITE PLAN



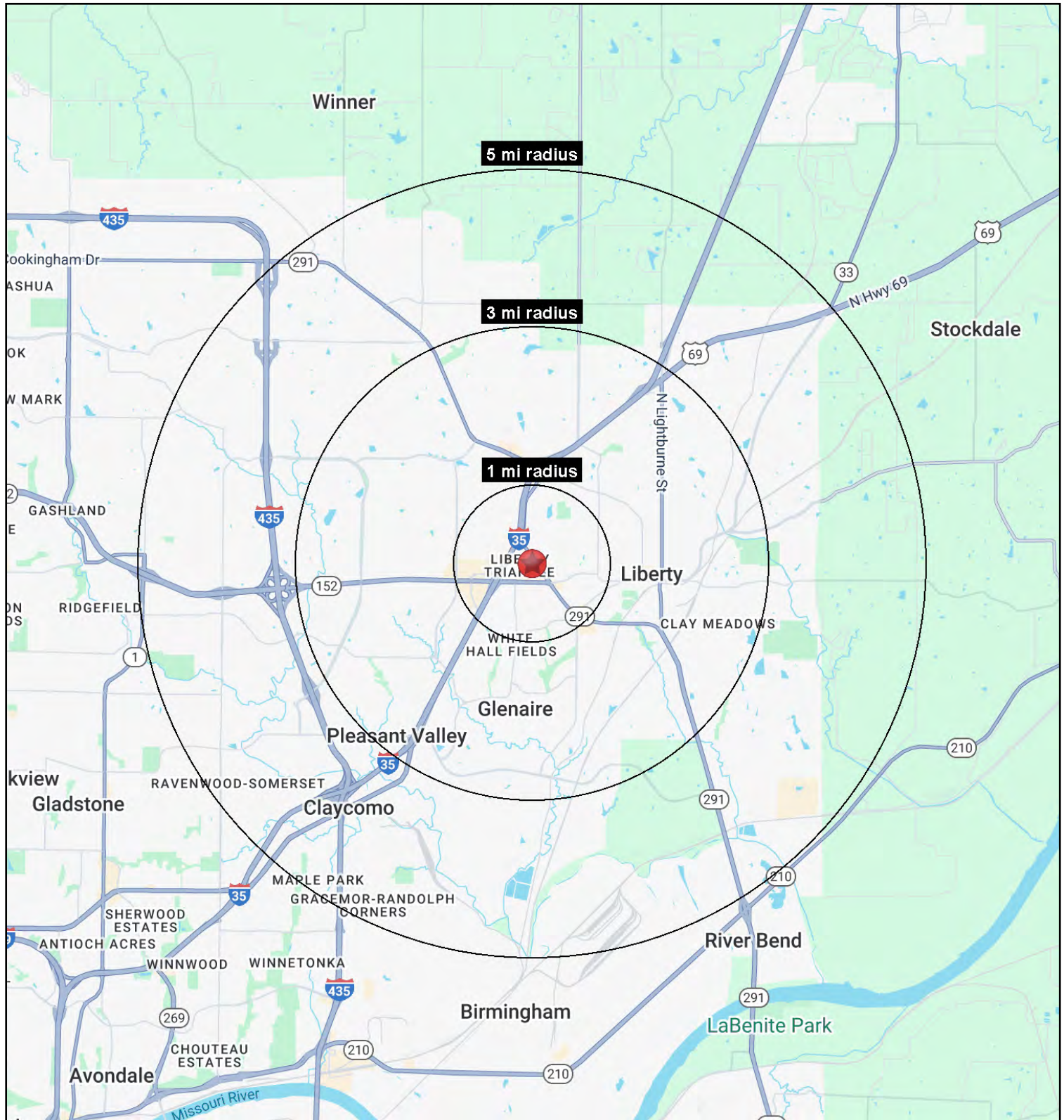
#	Name	SF	Address
A	Savers	26,680 SF	300 S. 291 Highway
B	Curves	1,400 SF	312 S. 291 Highway
C	Goodcents	1,400 SF	314 S. 291 Highway
D1	Sugar Kittens	1,400 SF	318 S. 291 Highway
D2	AVAILABLE	1,400 SF	320 S. 291 Highway
E	Aromatic Nepal	3,000 SF	322 S. 291 Highway
F	Massage Envy	1,200 SF	326 S. 291 Highway
G	Jim's Barber Shop	900 SF	328 S. 291 Highway
H	Frame It	900 SF	330 S. 291 Highway
I	Total Wireless	900 SF	332 S. 291 Highway
J	Penguins Kitchen	2,100 SF	336 S. 291 Highway
K	Palen Music	4,100 SF	340 S. 291 Highway
L	Big Bob's Flooring	7,794 SF	338A S. 291 Highway
M	Palen Music Center	3,396 SF	338B S. 291 Highway
N	Vapor Maven	3,363 SF	342C S. 291 Highway
O	Dollar General	7,794 SF	342B S. 291 Highway
P	TitleMax	3,238 SF	342A S. 291 Highway
Q	Beauty Mart Salon & Spa	3,420 SF	344 S. 291 Highway
R	World Liquors	3,200 SF	346 S. 291 Highway
S	Pizza Hut	1,850 SF	350 S. 291 Highway
T	State Farm	1,600 SF	352 S. 291 Highway
U	Mi Hacienda	4,150 SF	290 S. 291 Highway
V	Advance Auto	9,993 SF	200 S. 291 Highway
W	Hometown Auto	2,457 SF	342A S. 291 Highway
TOTAL		100,654 SF	

AERIAL





All information furnished regarding property for sale or lease is from sources deemed reliable, but no warranty or representation is made as to the accuracy thereof and the same is subject to errors, omissions, changes of prices, rental or other conditions, prior sale or lease or withdrawal without notice.





CROSSROADS SHOPPING CENTER

300-352 S. 291 Highway, Liberty, Missouri

300-352 S. 291 Highway Liberty, MO 64068	1 mi radius	3 mi radius	5 mi radius
Population			
2025 Estimated Population	5,297	53,998	88,045
2030 Projected Population	5,323	55,932	92,126
2020 Census Population	5,126	52,120	83,426
2010 Census Population	4,389	44,847	69,901
Projected Annual Growth 2025 to 2030	-	0.7%	0.9%
Historical Annual Growth 2010 to 2025	1.4%	1.4%	1.7%
2025 Median Age	41.4	37.9	37.5
Households			
2025 Estimated Households	2,260	20,346	33,088
2030 Projected Households	2,318	21,479	35,271
2020 Census Households	2,158	19,091	30,754
2010 Census Households	1,822	16,140	25,486
Projected Annual Growth 2025 to 2030	0.5%	1.1%	1.3%
Historical Annual Growth 2010 to 2025	1.6%	1.7%	2.0%
Race and Ethnicity			
2025 Estimated White	85.1%	83.7%	82.3%
2025 Estimated Black or African American	5.9%	6.5%	7.0%
2025 Estimated Asian or Pacific Islander	1.7%	2.6%	2.8%
2025 Estimated American Indian or Native Alaskan	0.3%	0.3%	0.3%
2025 Estimated Other Races	6.9%	7.0%	7.5%
2025 Estimated Hispanic	6.1%	6.4%	7.2%
Income			
2025 Estimated Average Household Income	\$116,717	\$144,354	\$137,516
2025 Estimated Median Household Income	\$88,298	\$113,690	\$111,741
2025 Estimated Per Capita Income	\$49,957	\$54,535	\$51,770
Education (Age 25+)			
2025 Estimated Elementary (Grade Level 0 to 8)	1.2%	1.5%	1.4%
2025 Estimated Some High School (Grade Level 9 to 11)	1.3%	1.7%	2.4%
2025 Estimated High School Graduate	20.6%	21.6%	22.6%
2025 Estimated Some College	19.0%	20.6%	21.2%
2025 Estimated Associates Degree Only	9.5%	10.2%	9.9%
2025 Estimated Bachelors Degree Only	30.6%	29.1%	27.4%
2025 Estimated Graduate Degree	17.8%	15.2%	15.1%
Business			
2025 Estimated Total Businesses	608	1,634	2,071
2025 Estimated Total Employees	5,796	15,094	18,164
2025 Estimated Employee Population per Business	9.5	9.2	8.8
2025 Estimated Residential Population per Business	8.7	33.1	42.5

©2025, Sites USA, Chandler, Arizona, 480-491-1112 Demographic Source: Applied Geographic Solutions 5/2025, TIGER Geography - RS1